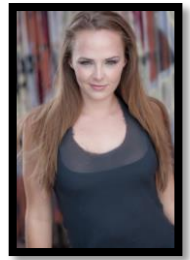




Kayleen Seidl

AEA

kayleen.seidl@gmail.com · www.kayleenseidl.com
Soprano w/Belt · Vocal Range: F3-E6 · Height: 5'5"



NATIONAL TOUR

GUYS AND DOLLS

Sarah Brown

Big League Productions
Dir. Jeffrey B. Moss

NY THEATRE

PHANTOM

Christine Daeé

Westchester Broadway Theatre

FIDDLER ON THE ROOF

(*FIDLER AFN DAKH*)

Ensemble/Tsaytl, Hodl,
Khave u/s *perf. In Yiddish

National Yiddish Theatre-Folksbiene
Dir. Joel Grey

THE SORCERESS

(*DI KISHEFMAKHERIN*)

Koyne/Ensemble
*perf. in Yiddish

National Yiddish Theatre-Folksbiene
Dir. Motl Didner
Mus. Dir. Zalmen Mlotek

EDDIE AND THE PALACEADES

Mary Doyle

Show Goes On Productions (MITF)
Dir. Jamibeth Margolis

REGIONAL THEATRE

IT SHOULDA BEEN YOU

Rebecca Steinberg

Gretna Theatre
Dir. Dennis Courtney

SHOWBOAT OKLAHOMA! TOMMY

Magnolia
Laurey Williams
Mrs. Walker

Broadway Palm Dinner Theatre
Dutch Apple Dinner Theatre
Woodstock Playhouse
Dir. Merete Muentner

SONGS FOR A NEW WORLD LES MISÉRABLES BILOXI BLUES LES MISÉRABLES

Woman 1
Cosette
Daisy
Ens./Cosette u.s.

Heartland Opera Theatre
Broadway Palm Dinner Theatre
Woodstock Playhouse
White Plains Performing Arts Center
Dir. Jeremy Quinn

SWEENEY TODD INTO THE WOODS

Ens./Johanna u.s.
Baker's Wife

Seagle Music Colony
St. Olaf Lyric Theatre

CONCERTS/CRUISE LINES

CURTAIN UP! ON BROADWAY GALA CONCERT DISNEY DREAM

Female Vocalist
Featured Soloist
Rapunzel/Cinderella/
Lone Pirate/Ursula u.s.

Jean Ann Ryan Productions
Thomas Jefferson Concert Hall
Disney Cruise Lines
Art. Dir. Ed Whitlow

TRAINING

◆ St. Olaf College: BM Vocal Performance w/Distinction ◆ Seagle Music Colony (Opera and Musical Theatre)

Voice

Lisa Rochelle
Margaret Eaves-Smith
Melissa Hart
Mary Kate Law

Dance

Janine Molinari (Tap)
Vic DiMonda (Theatre)
Jessica McRoberts (Theatre)
Basic Ballet/Jazz

Repertoire

Steve Silverstein
Sheri Sanders
Mark Fifer

SPECIAL SKILLS

Fluent in Spanish, Good with Languages, Diction/IPA: Italian/French/German, Basic Sword Fighting, Basic Puppeteering, Cartwheels, Good with Kids, Passport, Driver's License, Board Game Connoisseur